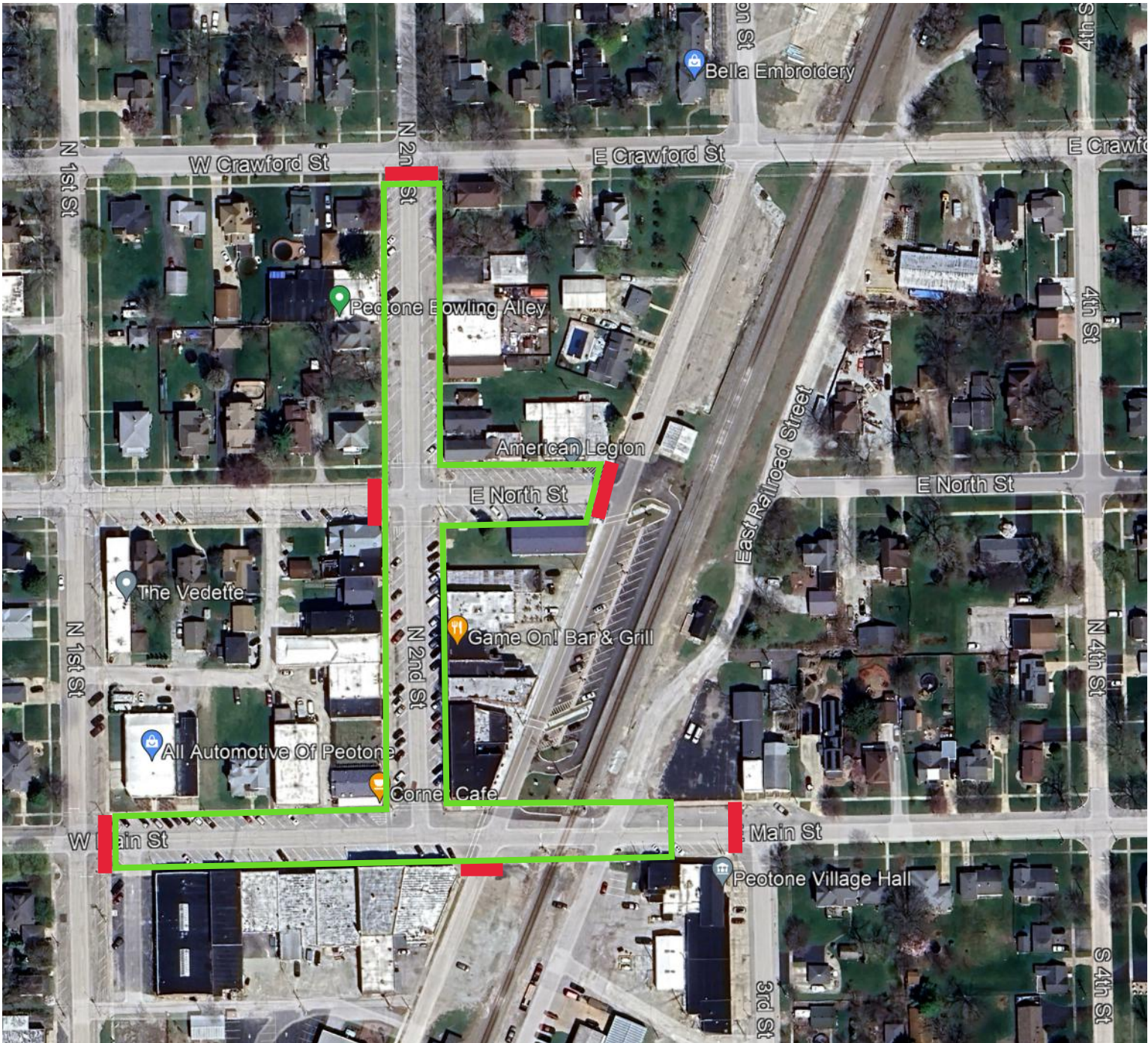




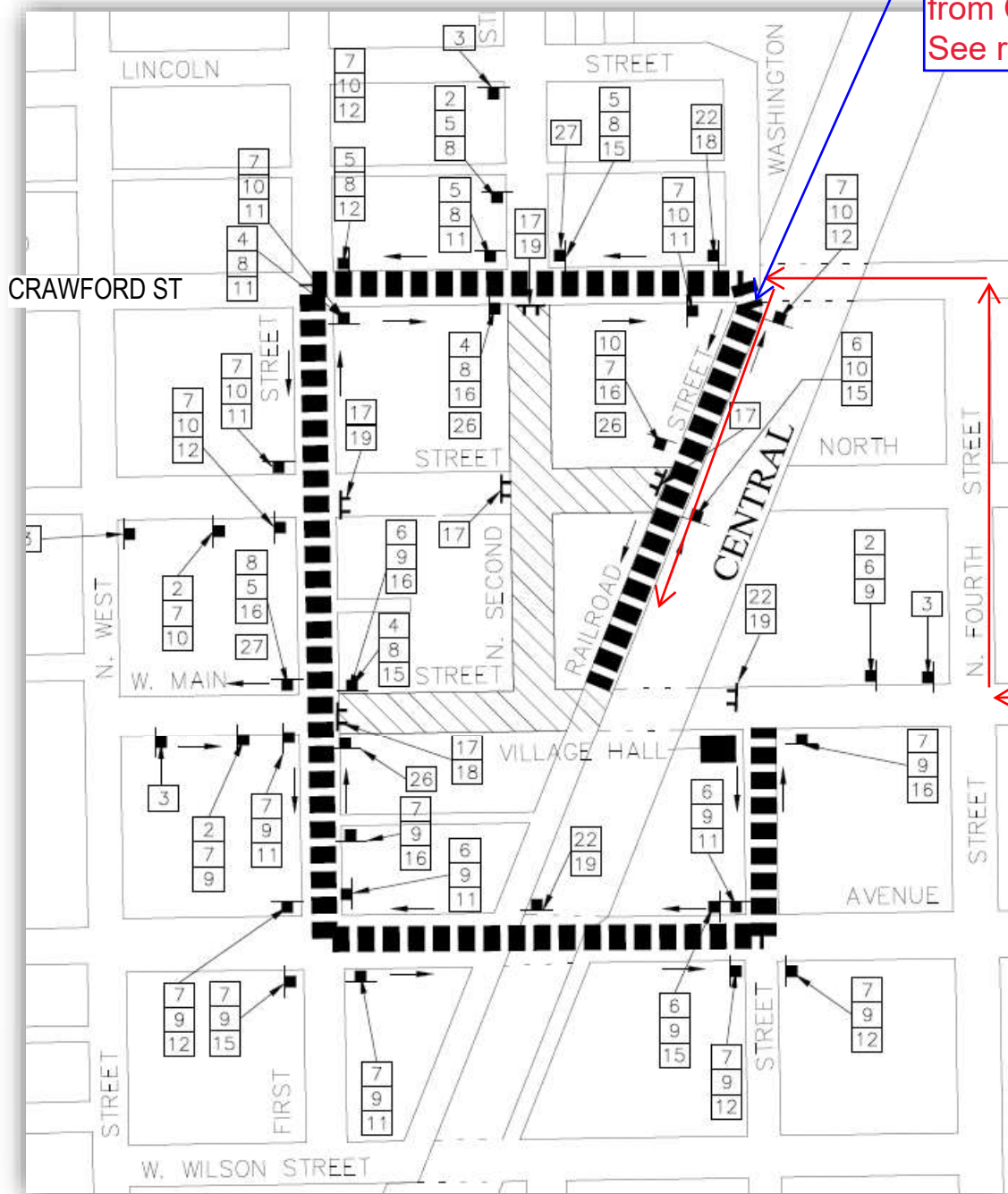
# Road Closure Locations



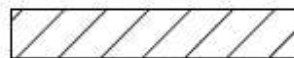
-  Road Closure Locations: **Main St** from RR Tracks to 1st St. **North St** from 2nd St to Railroad St. **2nd St** from Crawford St to Main St.
-  Project Limits

# Detour Route

To get to Railroad St Parking Lots, enter Railroad St from Crawford St. See red arrows.



SUGGESTED DETOUR ROUTE



CONSTRUCTION AREA DURING DETOUR