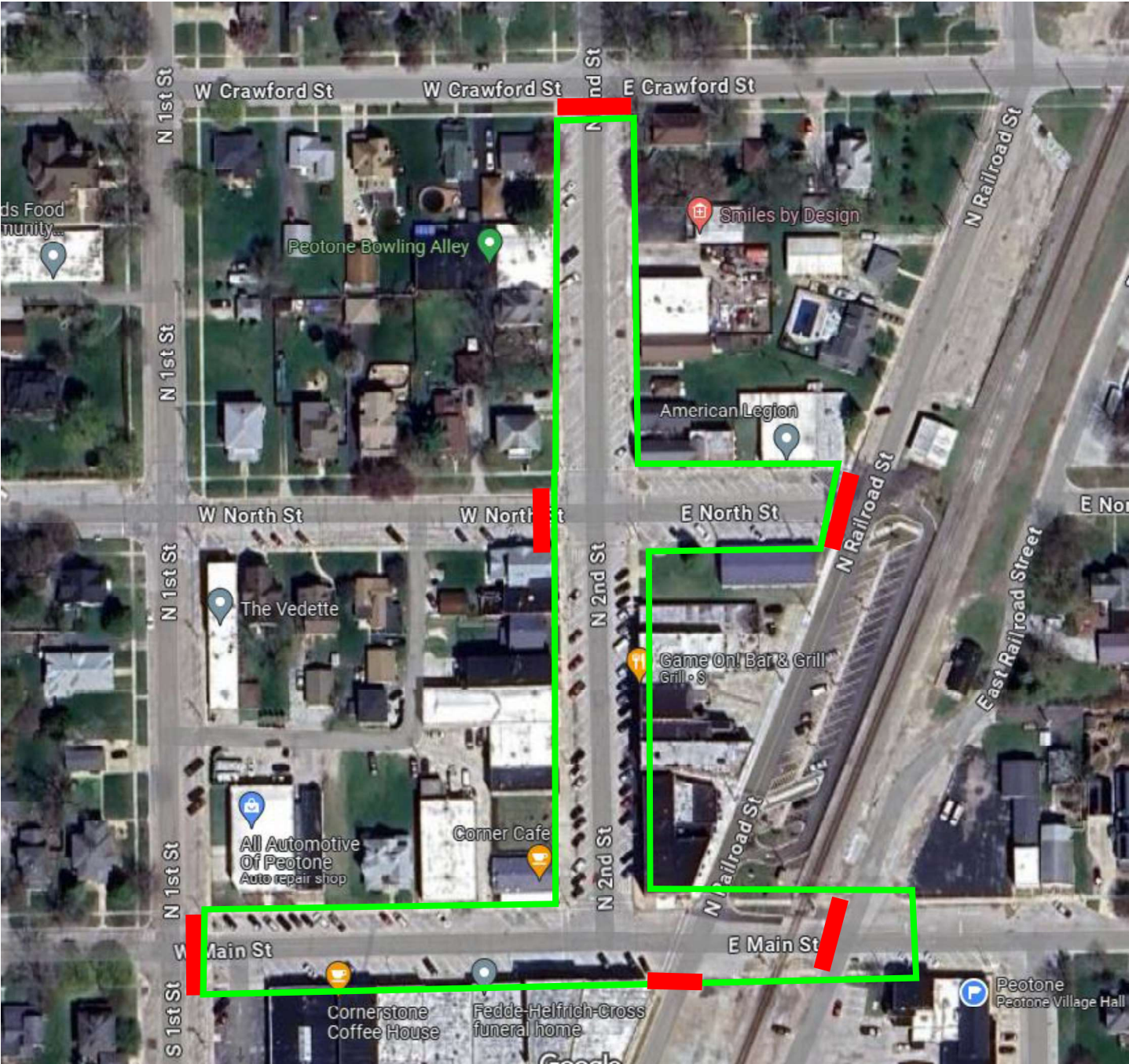


Road Closure Locations



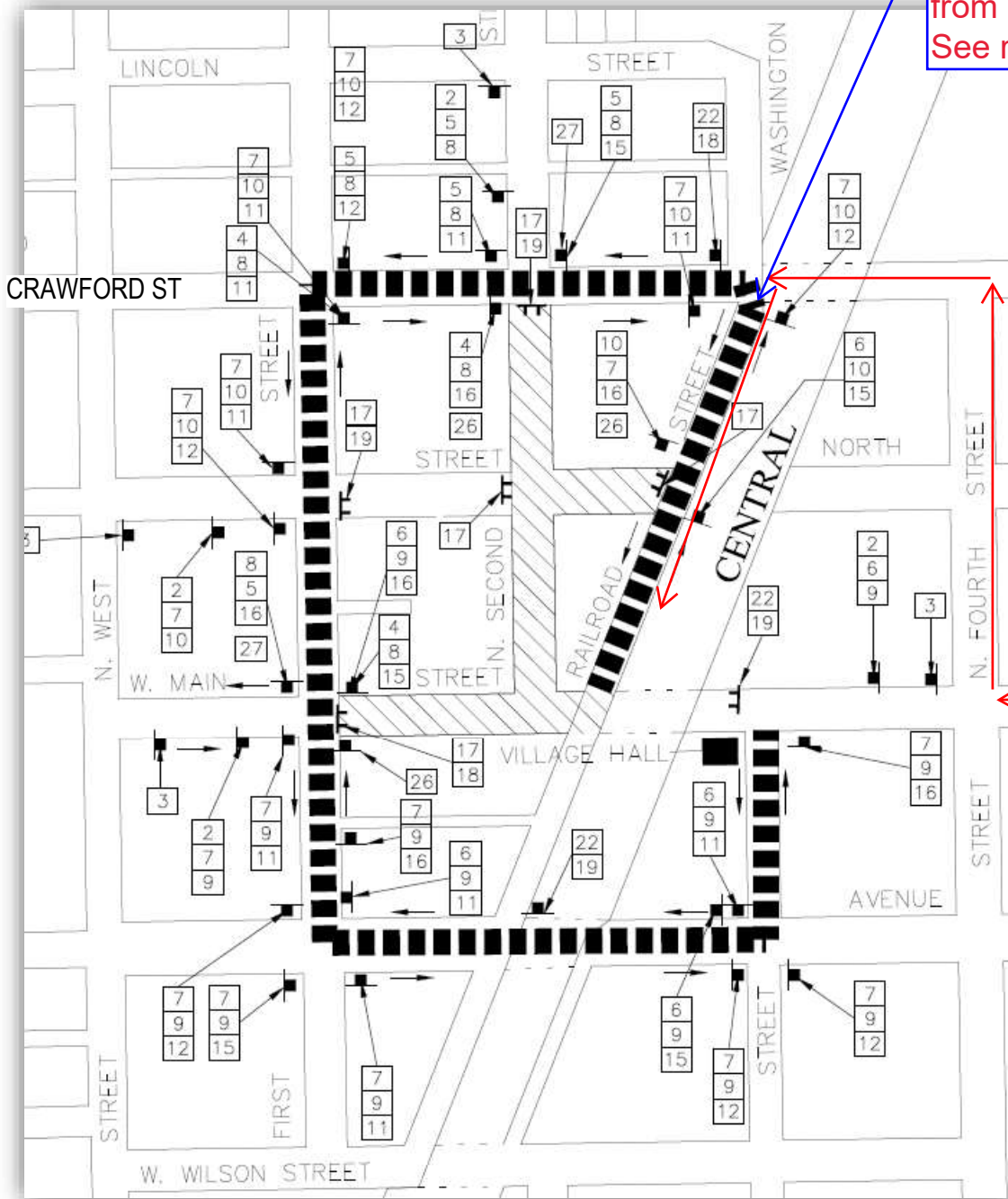
Road Closure Locations: **Main St** from RR Tracks to 1st St.
North St from 2nd St to Railroad St, **2nd St** from Crawford St to Main St.



Project Limits

Detour Route

To get to Railroad St Parking Lots, enter Railroad St from Crawford St. See red arrows.



SUGGESTED DETOUR ROUTE



CONSTRUCTION AREA DURING DETOUR